



www.bunrattycastle.ie





ONCE UPON A TIME..

There was a fairy called Éirinn, who was a good fairy, and lived mostly in the woods. Her best friend was Seán the Pixie, who liked to get himself into mischief.

One day Seán decided to play a trick on Éirinn by taking her fairy wings and hiding them somewhere in the park.

The fairies request the help of _____
to help find Éirinn's fairy wings.



INTRODUCTION

INSTRUCTIONS

We need you and your friends to help the fairies find their missing fairy wings. By following the clues and directions, you should be able to uncover the hidden location of the fairy wings. Along the way, you will need to locate the information panels at various points, answer a question and then finally decipher the answer.

THE CLUES

1. Follow the directions and map around the grounds of the park to discover the clues.
2. The information panels can be found throughout the grounds, around the park. Each panel contains information about fairies and their friends.
3. Match up each marker with the clue found within the booklet, answer the question, then enter your correct answer on the back page.

TO START THE TRAIL

Your start point is at the Music Shop. Please ensure you have suitable footwear and clothing before starting. Remember that you are responsible for the safety of yourself and others in your group, whilst on the trail. Please respect the privacy and property of others. Do not allow children to go ahead and become separated from your group; this is a natural environment with associated hazards.

Before you begin, please agree on an emergency meeting point should someone become separated from your group. In the event of an accident whilst on the trail do not attempt to move the casualty and please call the emergency services on 999, giving your location, Bunratty Castle and Folk Park.

1

FAIRY WELCOME CENTRE

DIRECTION

Are you all ready and prepared to explore? The fairies are very house-proud so please remember to take your litter home with you. As you exit the visitor centre, turn right and continue walking. Walk through the pillars and walk straight until you arrive at the Schoolhouse. Continue walking up the Village Street, turn left at MacNamara's Bar and then turn right. After a short distance you will discover the Fairy Welcome Centre.

CLUE

Reading the panel, can you fill in the missing word; 'And curiosity keeps leading us down new _____'.

ANSWER



ACTIVITY

Now let's have some fun...

The woodland is a great place to explore, can you identify any leaves on the trees? If so, can you list them? _____

WHO AM I??



I huffed and I puffed till I blew the house down.

Who am I? _____

I climbed a magical beanstalk.

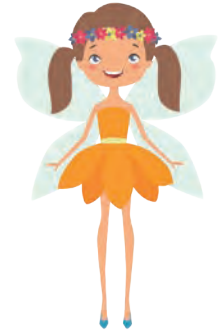
Who am I? _____

I have a grandmother, I wear a red cloak and I don't like wolves.

Who am I? _____

I ate all the porridge and slept in baby bear's bed.

Who am I? _____



FAIRY TRAVEL CENTRE

DIRECTION

Let's get moving again. After a short distance on your left you will discover your next clue location hidden in the wood.



CLUE

What type of songs do the fairies sing about?

ANSWER



ACTIVITY

A spider's web is a beautiful home, but it serves a deadly purpose. Spiders use their webs to trap their prey. How many webs can you see as you travel through the trail?

WOODLAND FAIRY SCAVENGER HUNT



Daisy



Feather



Fir Cone



Petal



Acorn



Buttercup



Oak Leaf



Interesting Twig



River Pebble



Daffodils



FAIRY UNIVERSITY

DIRECTION

Follow the path, keeping the stone wall on your left, until you arrive at a 'y' junction.



CLUE

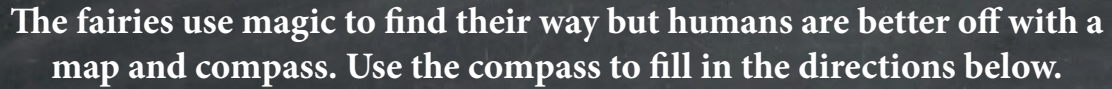
Fairy Wings are bound in golden threads of _____ hair?



ANSWER

ACTIVITY

How many buttercups can you find around the trail? Look closely and inside the petals you can find the stamens, which carry the flower's pollen. When insects visit the plant to feed on the nectar this pollen gets caught on their hairs and they carry it to other plants, carrying out the vital service of pollination!



The bridge is of the flowers.

The troll is of the bridge.

The fairy is of the flowers.

FAIRY WINGS

DIRECTION

Turn left, walk up the hill and on your left you will discover the large fairy wings at the front of the house.

CLUE

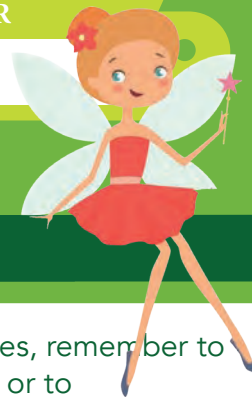
What did Éirinn, the fairy, cross?

ANSWER



ACTIVITY

Why not sit down here and see what it is like to be a fairy and take some pictures, remember to get the adults to sit on the chair as well. Ask an adult to follow us on Facebook or to post pictures of the trail @bunrattycastle.ie



FAIRY LIBRARY

DIRECTION

Turn around, and walk back to the path and then cross straight over. Keeping the walled garden to your left. At the end of the path turn right then left and you will discover your next clue.

Look up high in the trees,
how many fairies can you find?



Fairies



CLUE

Where do the fairies dance?

ANSWER

ACTIVITY

In the Fairy Library can you name the book, that has each sentence below in it;

Big ideas have small _____

Fold it over once and put it in the _____

I BELIEVE

DIRECTION

We hoped you enjoyed reading the stories about the fairies. Walk back to the path and turn left, continue walking along this path, don't turn off on to any other track. At the bottom of this path you will discover your next clue location, on your left.

Along the way, look up high in the trees, how many owls can you find?



Owls

CLUE

Take a look around you, searching the information panel, what did the fairy see in the sky?

ANSWER



ACTIVITY

You will need to walk through the wood to find all the letters to complete this activity. With your family or group, stand close together and hold hands, then shout out, 'I believe in fairies'!

FAIRY RIVER RESCUE

DIRECTION

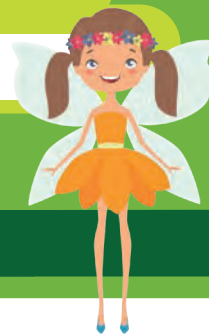
Walk back to the track, turn left and walk towards the wooden thatched hut. Close by you will discover the Fairy River Rescue. Please be careful here, as there is open water and it is dangerous for little folk.



CLUE

What does Seán ask Éirinn to keep?

ANSWER



ACTIVITY

Can you spot any birds near by?

☐

Common Chaffinch

☐

Blue Tit

☐

Blackbird

FAIRY REHAB

DIRECTION

Walk back to the path and turn left, crossing over the bridge. At the next junction turn left, and after a short distance you will discover your next clue.



CLUE

Fill in the missing word, 'It's a nice _____ day'.



ANSWER

ACTIVITY

Using your powers of observation and navigation, can you find the fairy wings at the entrance to the Fairy Water Wheel building. Take a snap shot here of you and your family.

FAIRY WATER WHEEL

DIRECTION

Turn around, walk back to the junction and turn left. Continue walking along this path until you discover a small stone bridge. Searching the trees around you, look out for the Fairy Water Wheel.



CLUE

What number must the fairy count up to?

ANSWER

ACTIVITY

It's not just the fairies that fly around here, how many insects can you spot flying around?

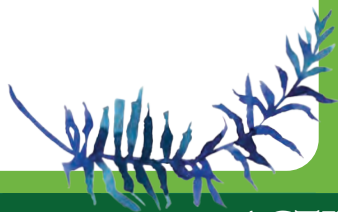
Insects



FAIRY SHOPPING VILLAGE

DIRECTION

Continue walking towards the crossroads, turn left and after a short distance you will discover your next location on your right.



CLUE

What did Seán and Éirinn both seek?



ANSWER

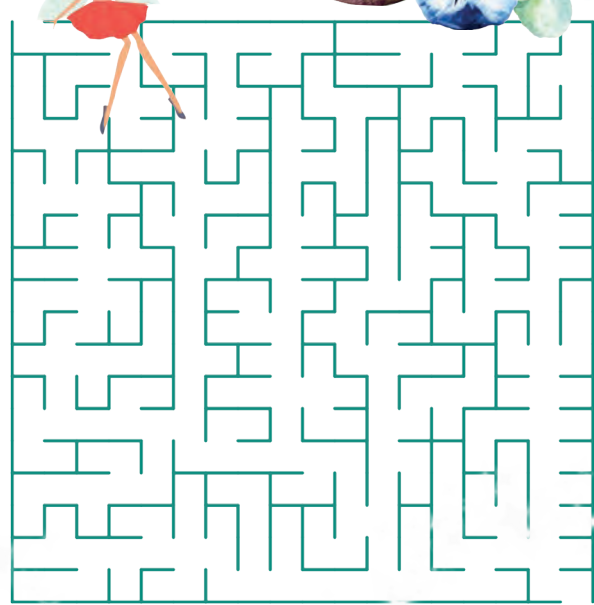
ACTIVITY

Can you name the shops which the fairy stores are imitating?



Oh no!!

One of the fairies is lost, help her find her way through the maze.



Circle the correct object:

Fairy

Flower

Feather



What Colour is this flower:

Circle the type of flower.

Rose

Pansy

Daisy



What colour is the dragonfly hiding here?

DUMMY TREE

DIRECTION

Continue walking until you arrive at a stone bridge, cross over the bridge and turn right. Here you will discover your next clue and a set of six large mushrooms.



CLUE

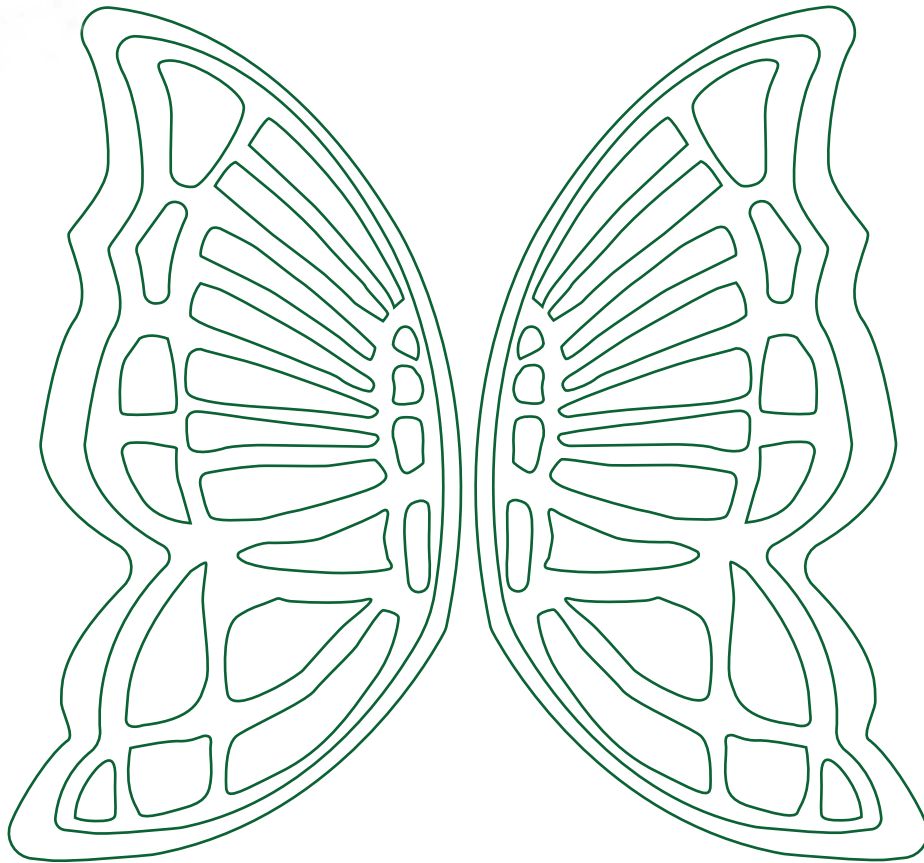
What does the tooth fairy keep a hold of?

ANSWER

ACTIVITY



Is it time for you to give up your dummy? Pop it in the dummy drum and the fairies will look after it. Humans (and baby fairies) are the only creatures to use dummies but some baby lemurs and chimpanzees do suck their thumbs!



ACTIVITY

Design your own fairy wings by colouring in the picture.



WISHING WATER LILY

DIRECTION

At the opposite side of the mushrooms, you will see a large pond. Make your way to this location. Be careful here with your group or family and do not allow them to go into the water.

Congratulations you have completed the trail.



CLUE

Searching the information panel, fill in the missing word, 'I believe in _____'.

ANSWER



ACTIVITY

At this wishing water lily, you can leave something for the fairies and make a wish, but be careful what you wish for as the trolls are watching close by.

ACTIVITY

Can you identify any of the leaves below?

Draw a line matching each word to a leaf.

Oak Beech Red Oak Horse Chestnut

Maple Birch



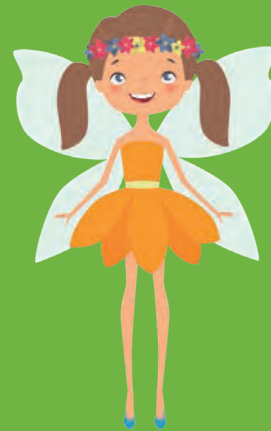
WISH LIST



A blank lined paper with a purple ribbon bookmark and a sprig of purple leaves at the bottom.



BUNRATTY CASTLE & FOLK PARK MAP



THE END

CONGRATULATIONS

Congratulations, you have solved all the clues and completed all the tasks the fairies set out for you. You are now officially a fairy helper and you're welcome back here anytime you want, just remember to tell your family and friends how good a time you had on the fairy trail. Hope to see you back again soon and remember the fairies are always building and adding new things in the woods.

FOLLOW US

Don't forget to follow us on social media. You can find all the news from the trail, upcoming events, new products, ask us a question, send us your comments and more by following the links below.

Facebook - [/bunrattycastlefolkpark/](#)
Instagram - [@BunrattyCastle.ie](#)

Whilst on the trail don't forget to share your adventures with everyone. [#bunrattyfairytrail](#)



shannon HERITAGE



SOLUTION

Enter your completed answers into the grid below. You should see each answer contains one shaded letter. Using the decoder, take the shaded letter and decode, then add the new letter to the final location grid. Congratulations, you have found the location of the hidden fairy wings. You can submit your answer back at the post box on the village street.

ANSWERS

1												
2												
3												
4												
5												
6												
7												
8												
9												
10												
11												
12												



A	B	C	D	E	F	G	H
X	E	L	I	R	A	E	W
I	J	K	L	M	N	O	P
S	Q	K	J	O	O	I	P
Q	R	S	T	U	V	W	X
B	E	F	X	H	I	E	D
Y	Z	1	2	3	4	5	6
M	C	4	8	7	1	0	9

FINAL ANSWER

1	2	3	4	5	6	7	8	9	10	11	12

I/We _____ consent to our child _____

being entered into a monthly draw to win a Fairy Goody Bag.

Email: _____